

Gate valves – bolted bonnet

Type

GA800RBB

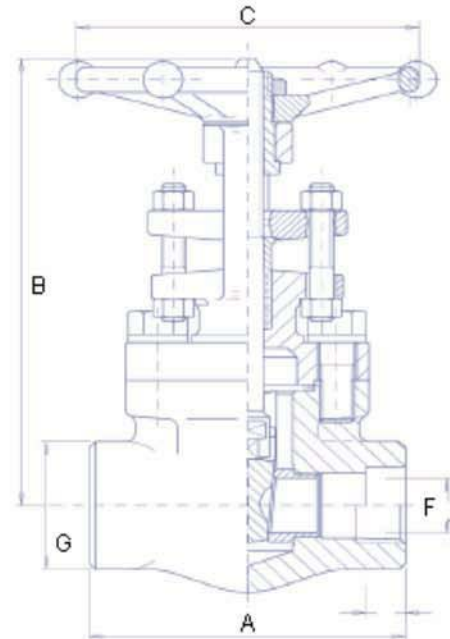
Design construction:
 API 602 - BS 5352 - NF M87.412
 Testing according to API 598 - BS 6755
 Marking MSS SP25

Socket weld Ends to ANSI B16.11
 Screwed Ends (NPT) to ANSI B1.20.1
 Butt welding Ends to ANSI B.16.25

Outside Screw and Yoke (OS&Y)
 Self aligning packing gland in two parts
 Spiral-wound gasket retained type
 Integral backseat

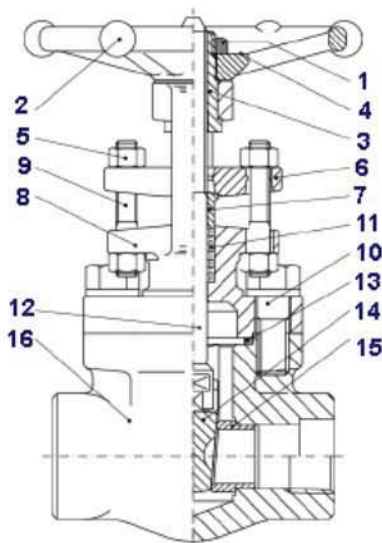
Ratings:

- carbon steel class 800 1975 psig@100°F
 138 bar + 38°C



REDUCED BORE - Type HL 100		CLASS 800				
size	inch	1/2	3/4	1	1 1/2	2
	mm	15	20	25	40	50
A		80	90	110	127	134
B open		152	158	196	255	290
C		88	88	97	138	138
F		9,6	14	18	30	36,6
G		32	38	48	64	78
WEIGHT Kg		1,9	2,3	3,6	7,3	7,6
FIGURE		HL103	HL104	HL105	HL107	HL108
PACKING		BH2	BH2	BH4	BH6/A	BY5/A
GASKET		G2	G2	G3	G6	G7

For special execution see special features
 For materials and testing pressure see technical data



TYPICAL GATE		
PART	NAME	MATERIALS
1	HAND/WHEEL NUT	CARBON STEEL
2	HAND/WHEEL	CARBON STEEL
3	YOKE SLEEVE	AISI 416
4	NAME PLATE	ALUMINUM
5	GLAND NUTS	ASTM A194-2H
6	GLAND FLANGE	ASTM A105
7	PACKING GLAND	AISI316
8	BONNET	ASTM A105N
9	GLAND STUDS	ASTM A193 B6
10	B/B BOLTS	ASTM A193 B7
11	PACKING GLAND	GRAPHITE
12	STEM	ASTM A479 410
13	B/B GASKET	F316L+GRAPHITE
14	WEDGE	ASTM A182 F6a
15	SEAT RINGS	ASTM A479 410
16	BODY	ASTM A105 N