

# Gate valves – welded bonnet

Type

GA800RBW

Design construction:

API 602 - BS 5352 - NF M87.412

Testing according to API 598 - BS 6755

Marking MSS SP25

Socket weld Ends to ANSI B16.11

Screwed Ends (NPT) to ANSI B1.20.1

Butt welding Ends to ANSI B.16.25

Outside Screw and Yoke (OS&Y)

Self aligning packing gland in two parts

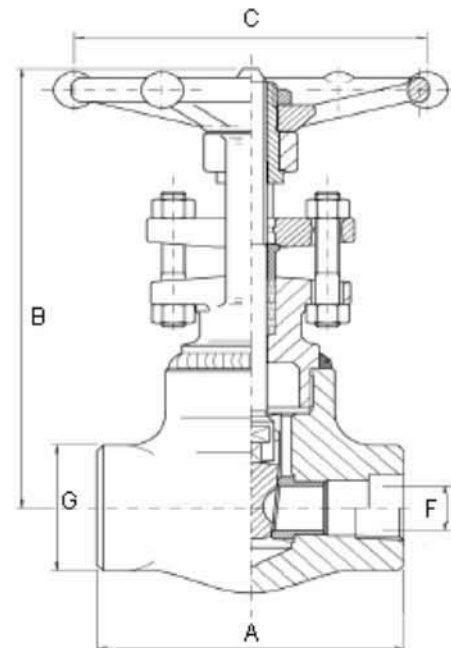
Integral backseat

Body Bonnet weld to ASME IX

Ratings:

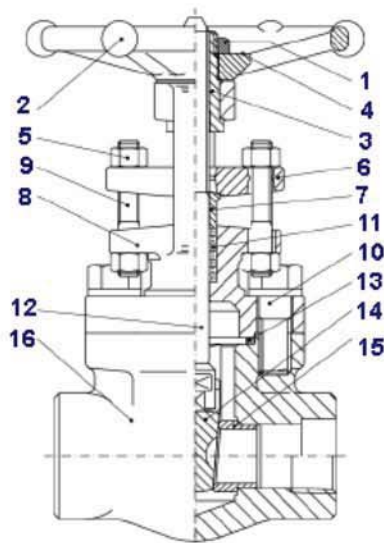
- carbon steel class 800 - 1975 psig@100°F  
138 bar + 38°C

REDUCED BORE - TYPE WL 100		CLASS 800				
size	inch	1/2	3/4	1	1 1/2	2
	mm	15	20	25	40	50
<b>A</b>		80	90	110	127	127
<b>B open</b>		152	158	196	255	290
<b>C</b>		88	88	97	138	138
<b>F</b>		9,6	14	18	30	36,6
<b>G</b>		32	38	48	64	78
<b>WEIGHT Kg</b>		1,6	1,8	2,9	6,1	8,2
<b>FIGURE</b>		WL 103	WL 104	WL 105	WL 107	WL 108
<b>PACKING</b>		BH2	BH2	BH4	BH6/A	BY5/A



For special execution see special features

For materials and testing pressure see technical data



TYPICAL GATE		
PART	NAME	MATERIALS
1	HAND/WHEEL NUT	CARBON STEEL
2	HAND/WHEEL	CARBON STEEL
3	YOKE SLEEVE	AISI 416
4	NAME PLATE	ALUMINUM
5	GLAND NUTS	ASTM A194-2H
6	GLAND FLANGE	ASTM A105
7	PACKING GLAND	AISI316
8	BONNET	ASTM A105N
9	GLAND STUDS	ASTM A193 B6
10	B/B BOLTS	ASTM A193 B7
11	PACKING GLAND	GRAPHITE
12	STEM	ASTM A479 410
13	B/B GASKET	F316L+GRAPHITE
14	WEDGE	ASTM A182 F6a
15	SEAT RINGS	ASTM A479 410
16	BODY	ASTM A105 N