

Mod. TJF = livello a parete con cristalli a TRASPARENZA PN64

Mod. TJF = TRASPARENT welded level gauge PN64

Fig. PP (PN64)

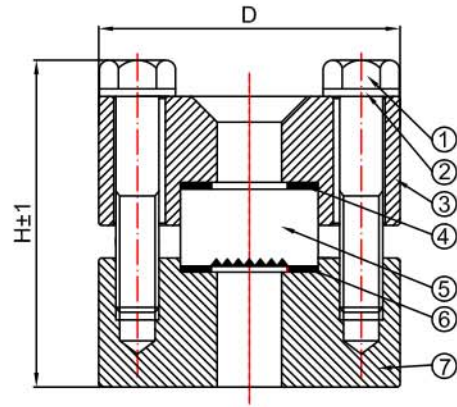
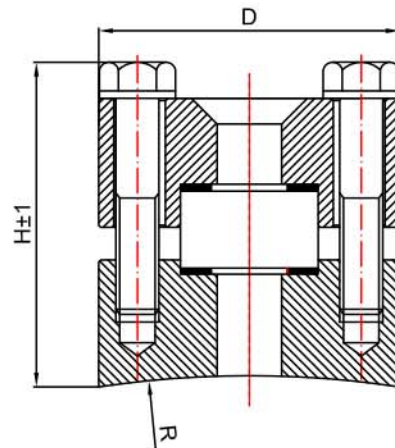
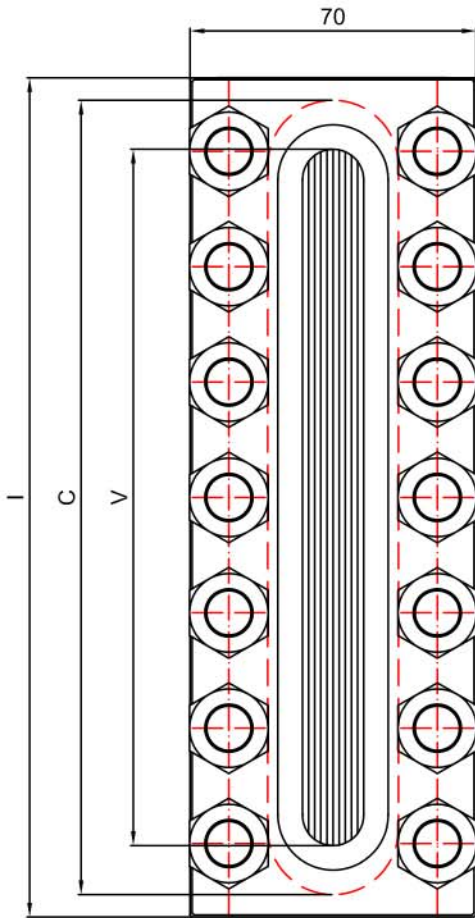


Fig. PR (PN64)



R= Parete raggiata su richiesta
R= Welded radius parts on request



D=80mm / H=75mm - Cristallo tipo B (largh. 34mm) PN100
D=80mm / H=117mm - Cristallo tipo B (largh. 34mm) PN120

D=80mm / H=75mm - Glass type B (size 34mm) PN100
D=80mm / H=117mm - Glass type B (size 34mm) PN120

Mis.	I ±1	V +2/0	C	D	H
11	128	91	115	70	75
12	153	116	140	70	75
13	178	141	165	70	75
14	203	166	190	70	75
15	233	196	220	70	75
16	263	226	250	70	75
17	293	256	280	70	75
18	333	296	320	70	75
19	353	313	340	70	75
24	406	367	190	70	75
25	466	427	220	70	75
26	526	489	250	70	75
27	586	549	280	70	75
28	666	628	320	70	75
29	706	668	340	70	75
36	789	751	250	70	75
37	879	841	280	70	75
38	999	961	320	70	75

In caso d'ordine prego precisare:

- quota di ingombro e visibilità
- parti a contatto fluido
- pressione e temperatura di esercizio
- fluido di passaggio

Cristalli di fornitura STD tipo A = LARGH. 30mm

Per le condizioni di esercizio consultare tabella CDE

A richiesta copertura e bulloneria Acc/Inox

In case of order please confirm:

- meas. of place and visibility
- wetted parts
- pressure and temperature
- fluid

Glasses STD type A = SIZE 30mm

Regarding operating conditions please check on the table CDE

On request cover and bolt in S.Steel

1	Bulloni / Bolts	B7	B7
2	Rondella / Ring	Fe zinc.	2H
3	Coperchio / Cover	Acc/C - C.S.	Fe zinc.
4	Guarnizione sup. / Upper gasket	Es./Amianto - Asb/Free	Es./Amianto - Asb/Free
5	Cristallo Rif. / Reflex Glass	Borosilicato - Borosilicate	Borosilicato - Borosilicate
6	Guarnizione inf. / Lower gasket	Grafite - Graphite	Grafite - Graphite
7	Corpo liv. / Level body	Acc/C - C.S.	Acc/Inox - S.S.

Livella a saldare per PARETE - TJF
Welded Level Gauge - TJF

